

2015-16 | By: Dr. Rizwan Rabbani Baig



Progress Report

SAHARA for Life Trust



Progress Report 2015-16

Introduction

“SAHARA for Life Trust” is a tax exempted charitable organization Registration No. (DDSW, WD&DM-LD (REGD) /98-1135 of 1998) enjoying consultative status with United Nations (U.N) (under the charter of DESA) as well as certified by Pakistan Center for Philanthropy (PCP) and accredited by charity commissions of U.K Charity no 1088219, USA Fed Id 331011467 as well as in Canada. SLT envisions to reach the unreached and serve the undeserved through projects in health, education and social sectors in remote areas of Pakistan along with attending to any national or international catastrophes like war, earthquake & flood worldwide.

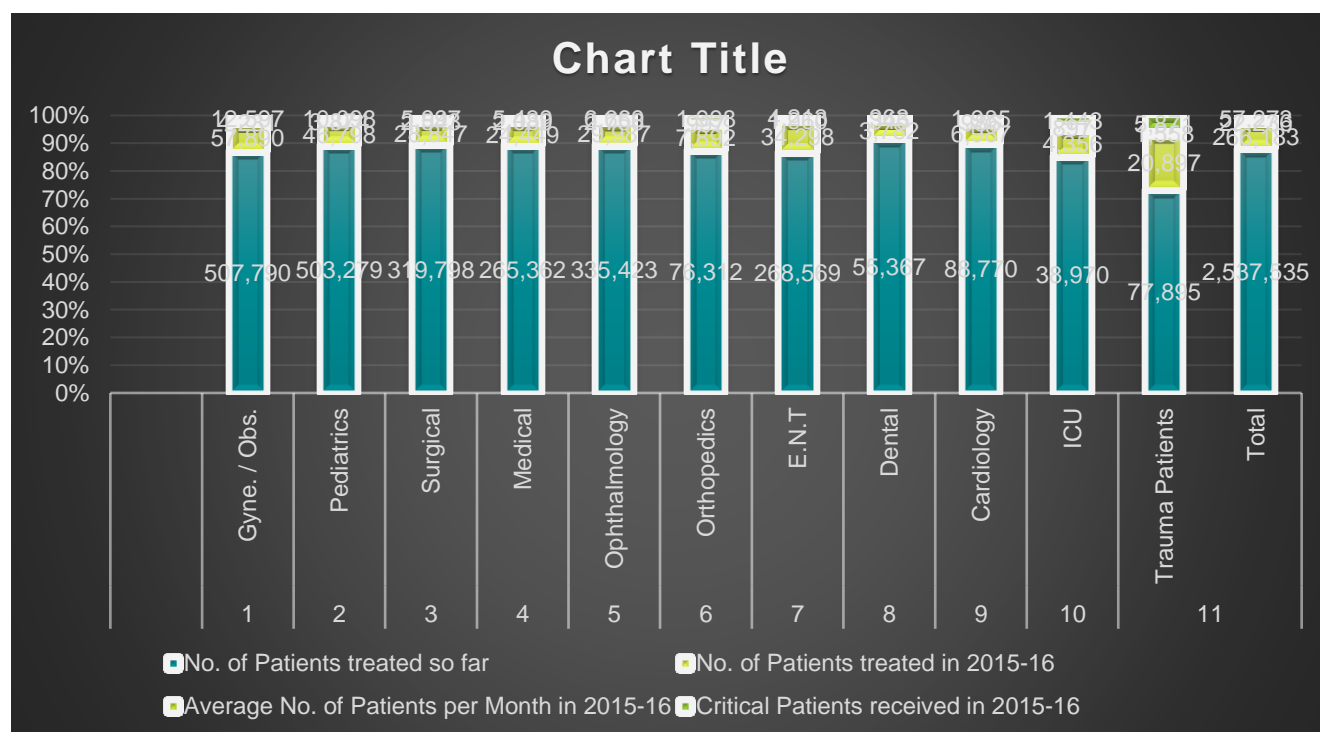
Sughra Shafi Medical Complex-Narowal:

First mega project of "SAHARA for Life Trust" is "Sughra Shafi Medical Complex-Narowal", a 350 bedded PMDC, UHS, MOH, ISO and PHC certified General teaching Hospital. SSMC is providing state of art healthcare facilities to more than 4.0 million population of catchment area of Narowal. All medical and surgical services including emergencies are offered 24/7, free of cost to poor & marginalized people and round about 2.537 million patients have been treated so far in SSMC. In this fiscal year, around 266,183 patients treated on FOC basis. The budget of 2015-16 was 335 Million in Pak Rupees. The main accomplishment of Sughra Shafi Medical Complex in 2015-16 is the conversion of 350 bedded hospital from 250 beds. Moreover, the entire services of Sughra Shafi Medical Complex Narowal have been expanded including the equipments & instruments during this fiscal year.



Patients Managed in the Fiscal Year (2015-16) in “Sughra Shafi Medical Complex Narowal”:

Sr. No:	Departments	No. of Patients treated so far	No. of Patients treated in 2015-16	Average No. of Patients per Month in 2015-16	Critical Patients received in 2015-16
1	Gyne. / Obs.	507,790	57,890	4,231	12,597
2	Pediatrics	503,279	46,798	3,874	10,098
3	Surgical	319,798	28,847	2,543	5,997
4	Medical	265,362	24,449	2,089	5,439
5	Ophthalmology	335,423	29,987	2,756	6,669
6	Orthopedics	76,312	7,892	997	1,998
7	E.N.T	268,569	34,298	1,960	4,213
8	Dental	55,367	3,782	345	963
9	Cardiology	88,770	6,987	986	1,985
10	ICU	38,970	4,356	897	1,443
11	Trauma Patients	77,895	20,897	1,558	5,871
	Total	2,537,535	266,183	22,236	57,273



SAHARA Medical College Narowal:

SAHARA Medical College is another mega project with the aim to cater the health care needs of remote underprivileged areas by educating health care professionals to the highest international standards and stimulating innovation through research and discover, disseminate, and apply



knowledge to improve health and reduce the burden of illness on society. Sahara Medical College is entertaining class of 100 medical students, with a planned expansion to 150 students. This college will serve as a subsidiary of the SSMC and endow the running cost of hospital. SAHARA Medical College-Narowal has already been functional in 2015-16 (30th March, 2016).

Faculty Members:

The faculty at SAHARA Medical College & Sughra Shafi Medical Complex Narowal, is one of its major strengths. The college along with its attached teaching hospital strive to choose its faculty members for their excellence and leadership in their respective disciplines and biomedical research. They combine a commitment to excellence in patient care and clinical teaching with a drive to develop new knowledge and insight in their areas of expertise. Their scholarly and inquires based approach makes them stimulating teachers to whom student responds by developing an attitude of clinical inquiry. Such attitude is of immense importance as precursor to the life-long learning, required for all physicians, whether they are to be clinical practitioners, or researchers or both. The faculty strength of both projects, SMC & SSMC have enormously been enhanced in 2015-16 because of newly build SAHARA Medical College.

